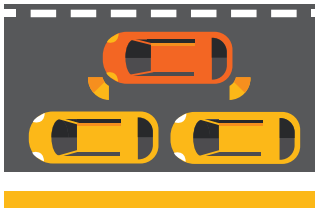


SCHOOL ZONE SAFETY TIPS

KEEPING YOUR CHILDREN SAFE WHEN DROPPING OFF AND PICKING UP AT SCHOOL

PARKING



NEVER double park - which includes not blocking traffic while "waiting for a spot" in the NO parking area. Go around the block.



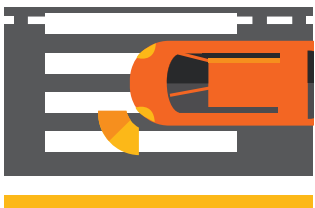
DROP OFF/PICK UP



Always follow the rules of the No Parking, stay for 2 minutes while dropping off or picking up and stay within 3 metres of your car.



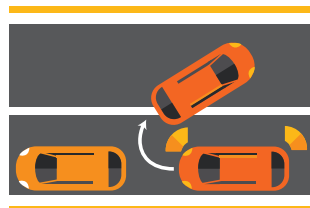
CROSSING



NEVER park or stop across/on a pedestrian crossing.



NO U-TURNS



NEVER conduct a U-turn around school especially over double white centre lines or near a crossing.



PEDESTRIANS



Always use crossing facilities. Stop Look Listen and Think even when you have right of way.



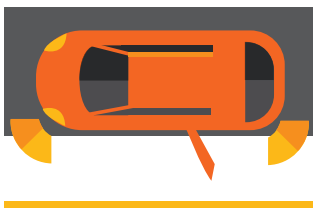
BUCKLE UP



Children stay buckled up until the vehicle has stopped.



EXITING THE CAR



Make sure children use the kerb side door when getting in and out of a car.



BE READY



Children be ready at the gate and looking for their car at pick up time.

